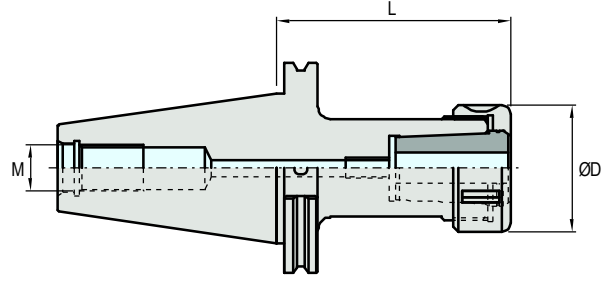


Pens Tutucu / N Tip / DIN 6388 / (A.N.S.I.) CAT - Form AD

Toolholder - Collet Chuck / Type N / DIN 6388 / (A.N.S.I.) CAT - Form AD

Spannzanghalter / Type N / DIN 6388 / (A.N.S.I.) CAT - Form Ad

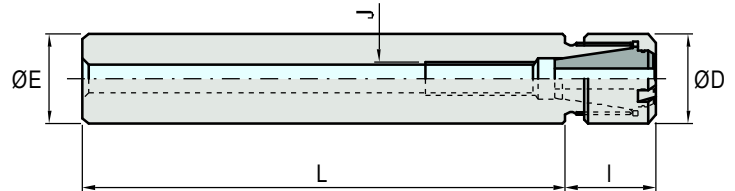


Kod Code Bezeichnung	Ölçüler Dimensions Abmessungen						
	Tip Type Type	Somun Collet Nut Spannmutter	Sıkma Aralığı Clamping Range Spannbereich	L	ØD	M	
CAT40	PK25 75	PK25	TM 225 FM	4.0 - 25.0	75	60	M16
	PK25 105	PK25	TM 225 FM	4.0 - 25.0	105	60	
CAT50	PK25 75	PK25	TM 225 FM	4.0 - 25.0	75	60	M24
	PK25 105	PK25	TM 225 FM	4.0 - 25.0	105	60	
	PK32 105	PK32	TM 432 FM	4.0 - 32.0	105	74	

ER Tip Silindirik Şaftlı Pens Tutucular - DIN 6499 - Form A

Toolholder - Collet Chuck With Cylindrical Shank , Type ER - DIN 6499 - Form A

Spannzanghalter mit der zylindrischen Schaft, Type ER - DIN 6499 - Form A



Kod Code Bezeichnung	Ölçüler Dimensions Abmessungen								
	ØE	Tip Type Type	Somun Collet Nut Spannmutter	Sıkma Aralığı Clamping Range Spannbereich	L	I	ØD	J	
VS16	ER11 105 S	16	ER11	TM 11 FM S	1.0 - 6.0	105	25	16	M8
VS20	ER11 150 S	20	ER11	TM 11 FM S	1.0 - 6.0	150	25	16	M8
VS16	ER16 105 S	16	ER16	TM 16 FM S	1.0 - 10.0	105	32	22	M10
VS20	ER16 150 S	20	ER16	TM 16 FM S	1.0 - 10.0	150	32	22	M10
	ER20 105 S	20	ER20	TM 20 FM S	1.0 - 13.0	105	38	28	M12
	ER20 150 S	20	ER20	TM 20 FM S	1.0 - 13.0	150	38	28	M12

Sipariş Örneği / Ordering Example / Bestellbeispiel ab Lager : CAT40 PK25 75